

# DIWICON-G DW 71 GEx

## EXPLOSION-PROOF MOTION DETECTOR UNIT

The DW 71 GEx explosion-proof motion detector unit is typically used to provide protection and security for hazardous facilities. It is highly sensitive, has an extremely large field of view, and consumes very little energy. Because its operation is infrared based, it can also be used at night.

### FEATURES

- 160° field of view
- High sensitivity
- Infrared based operation
- Low consumption

### SPECIAL CHARACTERISTICS

- Indicator LED
- Explosion-proof design
- NPT 3/4" technical joint
- Stainless steel casing

### INDUSTRIAL DESIGN

- Operation temperature: -35°C to +60°C
- Protection: IP65 (IEC 529 conform)

### APPLICATION

The DW 71 GEx is used as an external accessory to the DW 628 GEx industrial controller in areas where other security systems and devices are not installed. It provides protection for closed stations and instrument cabinets.

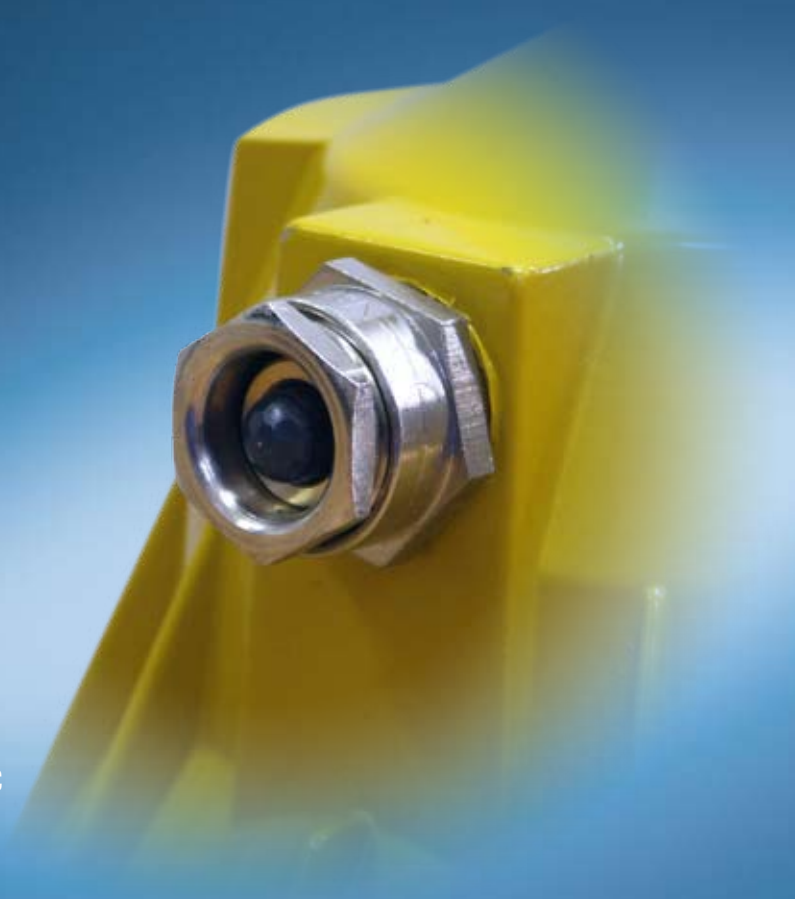
### TECHNICAL DATA

#### GENERAL SPECIFICATIONS

Method of operation:	Infrared based
Field of view:	160°
Signal light:	Yes, with LED
Operational temperature range:	-35°C to +60°C
Electrical protection:	IP65
Ex protection:	IIG EEx d IIC T6

#### ELECTRICAL SPECIFICATIONS

Nominal voltage:	3.3 V
Nominal current:	140 µA
Nominal consumption:	0.462 mW
Current when signaling:	3.6 mA
Consumption when signaling (LED):	11.8 mW



**CASON**

**CASON Engineering Plc.** Velencei út 37. H-2030 Érd, Hungary  
Tel: +36 (23) 522-100 • Fax: +36 (23) 522-190  
office@casonplc.com • www.casonplc.com